



# Samantha Santana

WALLPAPER CREATIVE STUDIO

*how to install your*  
**REMOVABLE FABRIC WALLPAPER**

*just peel and stick it!*

Thank you so much for your purchase! I can not wait to see how you use your wallpaper in your home, office, etc. Please feel free to share pictures with me on Instagram. Just tag @mssamanthasantana.

Thank you again!

**[samanthasantana.com](http://samanthasantana.com)**

# How to install your REMOVABLE FABRIC WALLPAPER...just PEEL & STICK!

## GETTING READY

### GET A FRIEND & SET ASIDE SOME TIME

Hanging wallpaper is a two-person job. You'll get the best result by hanging all of the wallpaper intended for a single wall or installation area at the same time.

### MATERIALS

Dusting rag  
Cleaning rag  
Rubbing alcohol  
Plastic paddle included in your package  
Sharp utility knife

### PREPARE YOUR PAPER

Unroll each strip so that they face the same way. Reference the website to make sure you are facing your rolls upright. If your wallpaper is labeled "A" and "B," organize your rolls in the pattern A-B-A-B and so on. Don't trim any part of the paper before hanging.

### PREPARE YOUR WALL

The wall you're applying your paper to should be smooth, clean and dust free. Clean walls with dusting rag, and then wipe down walls SUPER well with rubbing alcohol. Make sure the area closest to the ceiling is super clean. Allow wall to dry for a couple minutes after cleaning with rubbing alcohol. Patch or sand any damaged areas of the wall, especially where sharp edges might pierce or tear the wallpaper. Make sure to dust and wipe down these areas well. For best results, apply wallpaper to a surface that is a solid, white or light color. If your wall has been recently painted, allow at least 4+ weeks for the paint to cure before applying wallpaper. Applying wallpaper over uncured paint can lead to bubbling.

## START HANGING

### START AT THE LEFT EDGE OF YOUR WALL

If you're applying multiple strips of wallpaper, hang them from left to right to ensure a smooth repeat of the design. Start with the upper left corner of the room, wall, or other surface you're covering. If covering an entire room, choose an inconspicuous corner to begin since the repeat will not match up on the final seam.

### REMOVING WALLPAPER BACKING

Starting from the top of the roll, pull off about 18" of the wallpaper backing from the fabric wallpaper. Have one person hold the the fabric wallpaper, and one person pull the backing.

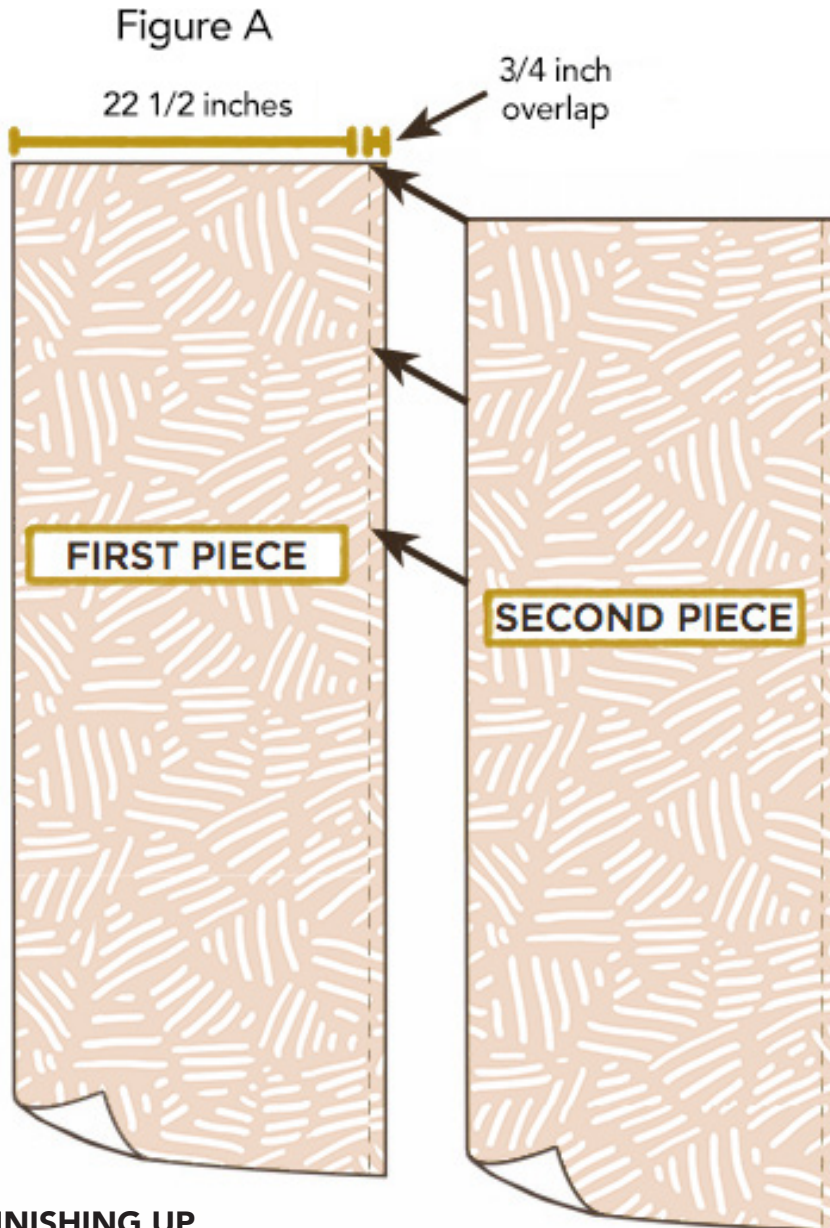
### START APPLYING

Pick up your first strip and align the top of the wallpaper with the ceiling, making sure the edge is straight and even on the wall. Ask your friend to step back and check that the strip is straight and level. Firmly press the wallpaper lacking the backing onto the wall. Smooth out any air bubbles with your hands and then with the plastic paddle (THIS IS SUPER IMPORTANT). Once securely applied, start pulling more of the back off and down in 18" sections, and firmly press the wallpaper against the wall, smoothing as you go. Continue pulling off and pressing the wallpaper on until you get to the bottom of your roll. If you have excess paper, leave it for now rolled up at the bottom of your wall.

If you accidentally place your panel incorrectly, no problem! The wallpaper is repositionable, and you can simply pull it off the wall and press it down again. To watch a video of this pulling/pressing/smoothing process, visit [samanthasantana.co/installation/](http://samanthasantana.co/installation/)

### KEEP GOING

Pick up your second strip of wallpaper and apply it so that its left side overlaps the right side of the previous strip by approximately 1/4 inch, carefully visually matching the repeat. There is no need to trim the overlap; it guarantees that the wallpaper will repeat seamlessly (Figure C). Repeat this step, moving from left to right and aligning each new strip over the strip to its left.



For more information and to watch an install video, go to:  
<http://samanthasantana.com/installation/>

### FINISHING UP

Using a sharp utility knife, trim the extra paper at the bottom/ edges of the paper. You can run the knife against the baseboard or the wall corner to achieve a smooth, even cut.

### SUPER IMPORTANT!

In super rare cases, the top corners of the wallpaper will peel back from the wall. DO NOT PANIC! Simply wipe down the area with rubbing alcohol where the wallpaper has peeled back and immediately reapply, pressing down and smoothing out firmly. It is a good idea to **watch the wall carefully over the next 24 hours after installing your wallpaper** to catch this problem if it happens to you.